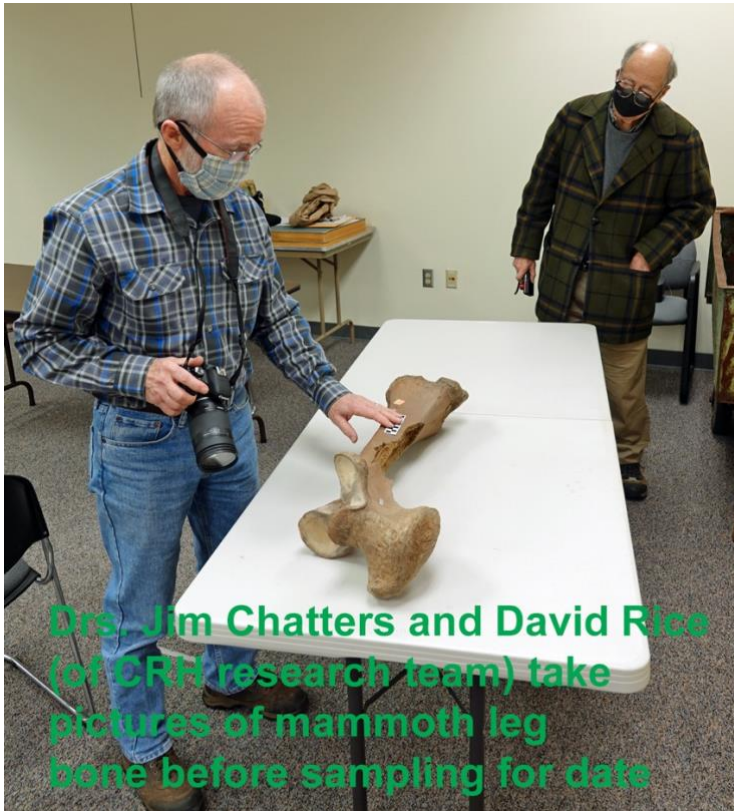
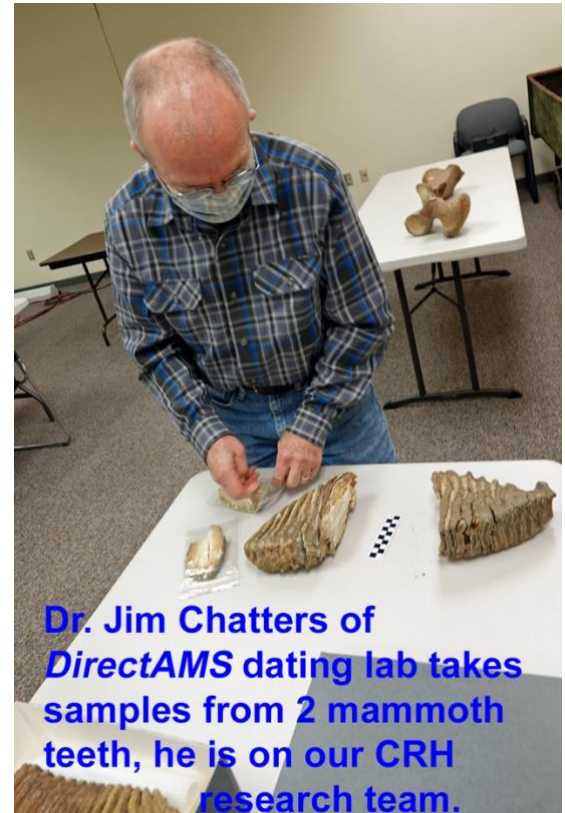


Visit by Drs. Jim Chatters (Direct AMS), David Rice and Dale Croes, as part of the PNWAS Chehalis River Hypothesis (CRH) team, to assess and take samples for C14 dating of Mammoth bones at the Cowlitz County Historical Museum (1-22-2021)



Drs. Jim Chatters and David Rice (of CRH research team) take pictures of mammoth leg bone before sampling for date



Dr. Jim Chatters of DirectAMS dating lab takes samples from 2 mammoth teeth, he is on our CRH research team.



Stemmed Point (found earlier than Clovis Pts) at the Cowlitz Co. Museum

